



MONTHLY MEMBERSHIP PROGRESS REPORT

District 1 H

Results as of: 04/30/2018

GMT: STEVE ANTON

LOCATION ILLINOIS

GMT CA

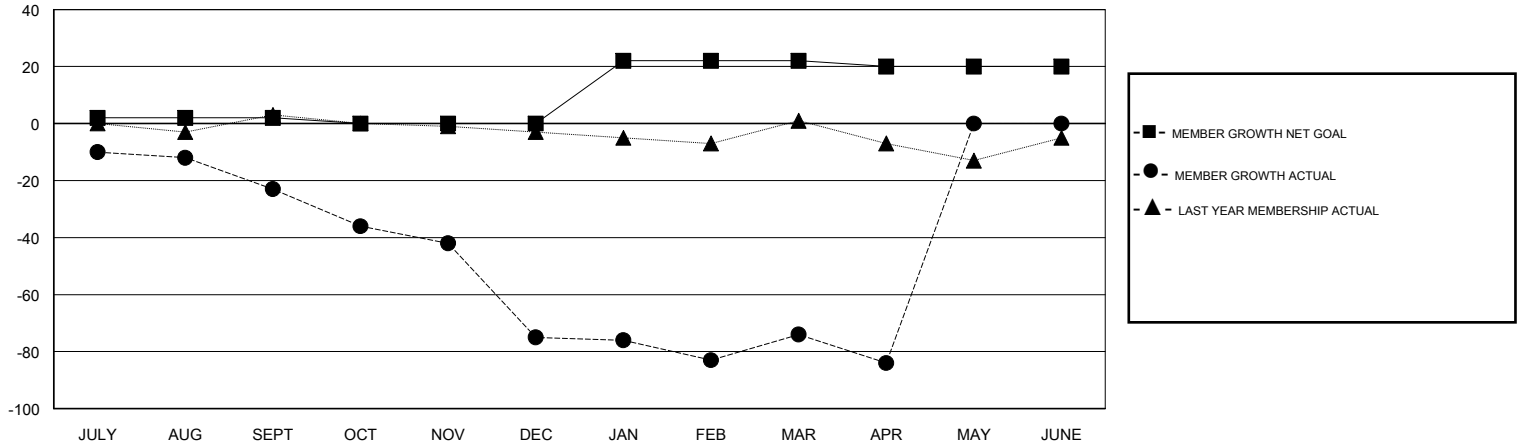
Clubs			
RESULTS FOR 2017-2018			
QUARTER	NEW CLUB GOAL	NEW CLUBS	DROPPED CLUBS
JULY/AUG/SEPT	0	0	0
OCT/NOV/DEC	0	0	2
JAN/FEB/MAR	1	0	0
APR/MAY/JUNE	0	0	0

Members			
RESULTS FOR 2017-2018			
QUARTER	MEMBER GROWTH NET GOAL	MEMBER GROWTH ACTUAL	DROPPED MEMBERS ACTUAL (including transfers)
JULY/AUG/SEPT	2	11	33
OCT/NOV/DEC	-2	10	59
JAN/FEB/MAR	22	22	21
APR/MAY/JUNE	-2	9	18

GOALS AND ACTUAL NEW CLUBS CUMULATIVE



GOALS AND ACTUAL MEMBERS CUMULATIVE



DROPPED CLUBS: 2	24 CLUBS OF 42 ADDED 1 OR MORE NEW MEMBERS	<u>GENDER DISTRIBUTION</u> MALE 807 (76.64%) FEMALE 246 (23.36%) Women Percentage Fiscal Year Goal: 23%
<u>DROPPED MEMBERS</u> DECEASED 13 CLUB CANCELLED 22 OTHER 96 TOTAL 131	CLICK HERE FOR CUMULATIVE MEMBERSHIP DATA	TOTAL FAMILY UNIT MEMBERS 151 FAMILY MEMBERS PAYING HALF DUES 78